

Anti vandal



## Front opening counter PMS BE

Transfer valuable items and documents securely without  
**compromising on communication**

The facades counters are mainly used in outdoor settings under shelter (guard posts, reception station, ATM etc ...). Their volume allows the transfer of small as well as larger documents or securely packages, these models ranging from a vandal resistance up bulletproof taking the highest levels of certification account (FB7NS). If required fire resistance can be offered for some models. Associated with full duplex intercom system, these machines perfectly facade protect employees from physical assault, drafts and dust.

### References :

A74056 PMS-BE anti vandal

## PMS-BE

Integrated into a building facade, this document tray enable the transfer of money, tickets, notes and cumber some less parcel from an inner area to an outer area in full safety.

Protect the employee from all physical and hold-up attacks, level FB4 according to the Standard EN1522, and also again the draught and dust.

### Technical Specifications :

#### PMS-BE

- Steel sump 50/10
- Black skinplate receptacle
- Peripheral bracket making gasket-cover in an anodised brushed aluminium.

Ready-made delivered with screws and bolts kit

Use: Indoor or outdoor under cover

Vandal resistant

#### Drive :

- Sliding receptacle with manual handling.
- The receptacle is automatically locked as soon as it reaches the employee or customer side.
- Unlockable by a simple pressure on the ball handle.

#### Packaging :

	PMS-BE
Packaging unit weight	13,5 kg
Package size	120 x 390 x 530
Type of packaging	carton

# PMS-BE



	Overall	Drawer	Capacity until
<b>Height</b>	60 mm (100 mm with handle)	55 mm	35 mm
<b>Width</b>	406 mm	375 mm	300 mm
<b>Depth</b>	383 mm	338,5 mm	257 mm
<b>Extension</b>		200 mm	

Weight: 11kg

Fixing aperture :

- Work plan H x L x P) : 60 x 380 x 342 mm
- In the facade (H x L): 70 x 416 mm (front panel integrated in the wall)

## Installation :

This front opening counter can be installed:

- In steel tubular frame walls or concrete walls
- Embedded in a reception desk work plan and sharing
- Mounting possible with edge Surface or flush mount. Thickness of the border: 3mm x 37 mm overhang on three sides of the unit.

## Others models Front opening counters:

- Model 50 (anti vandal)
- Model 52 (Ballistic protection FB4)
- Model 53 (Ballistic protection FB4)
- Model 54 (Ballistic protection FB7)
- Model 63 (Ballistic protection FB6)

### Users includes

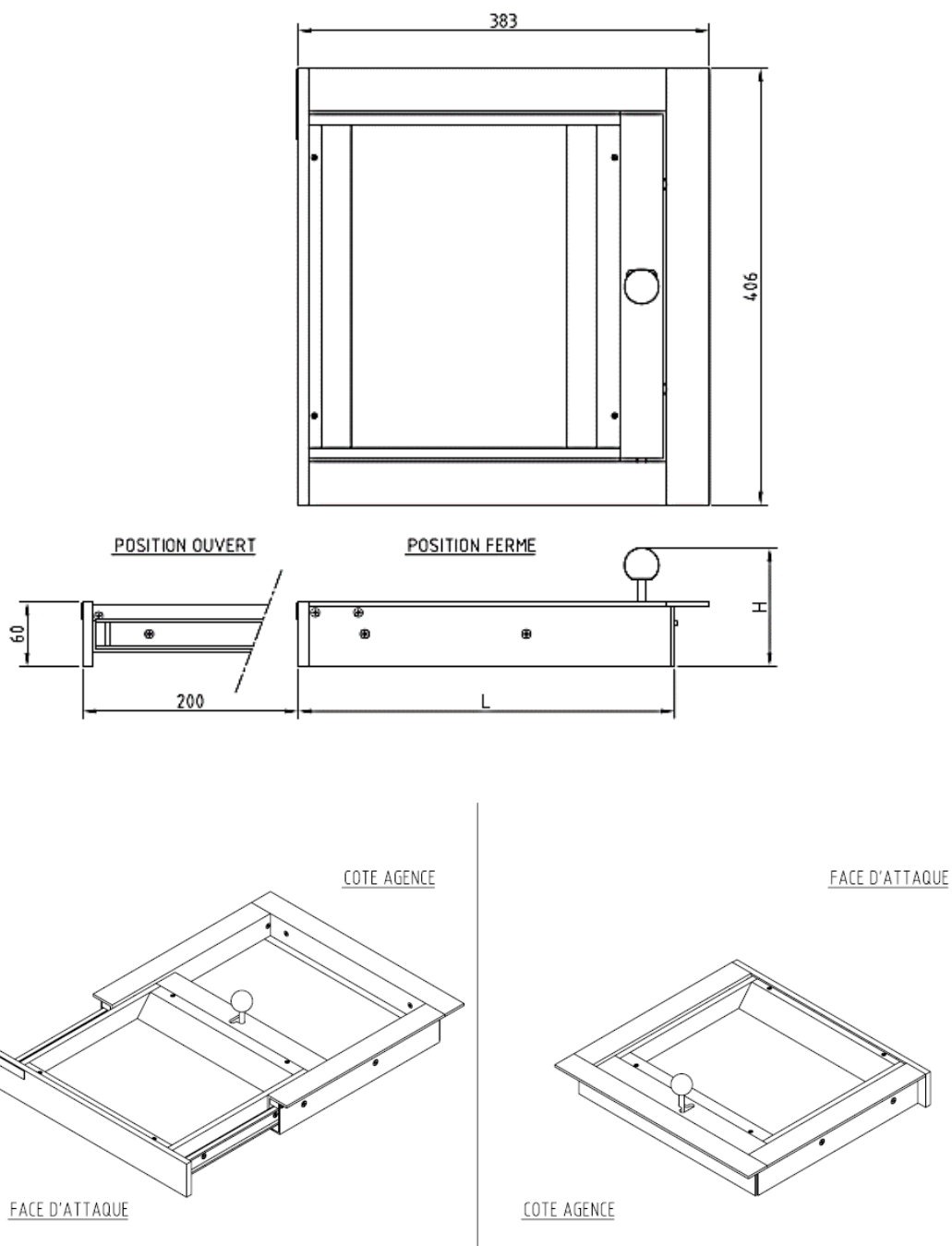
- Amusement parks
- Embassies
- Hospitals
- Receptions

### Strengths

- Aesthetic
- Protection of people and values
- Tray effective space
- Waterproof to drafts
- Quick easy installation

# Technical specifications

PMS-BE

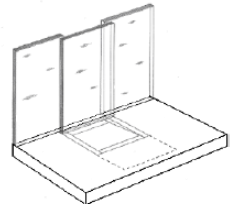


# Technical Sheet

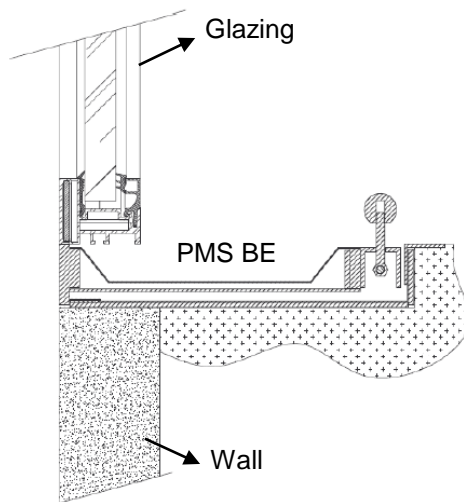
## PMS-BE

### INSTALLATION

- Ensure that the counter top and the facade are suitable for installation of the terminal (volume, weight, stability, fixing, level, strength, etc.).
- Make provision for the opening in the counter top.
- Make provision at the front of the counter top for an area that can be dismantled for replacement of the facade terminal, if necessary, once the pane of the terminal is in place.
- Make provision for the grooves for flush installation.
- Put the terminal in position.
- Fix the terminal using M5 diameter screws as a minimum requirement. Drilling to be done with a minimum of 2 holes on each side.
- If applicable, seal the inside with silicon.



Note: Do not seal the unit directly to the facade to ensure that it can be removed for repair if necessary.



[www.gunnebo.com](http://www.gunnebo.com)



Gunnebo Electronic Security  
23 Route de Schwobsheim 67600 Baldenheim  
Tél : +33 (3)88 85 06 06

